



The Farmhouse, Weadow Lane, Middleton-By-Youlgrave, Derbyshire,



Weaddow Lane

Middleton-By-Youlgrave

Offers Over

£550,000

This remarkable opportunity offers the chance to complete and personalise a partially converted farmhouse set within an expansive plot

Nestled in the idyllic village of Middleton By Youlgrave, right in the heart of the Peak District National Park, the property enjoys a peaceful, rural setting surrounded by open countryside and dramatic landscapes.

The farmhouse, currently configured as a three-bedroom residence, has been partially renovated, presenting a rare blank canvas for a buyer to influence the finishing touches and create their dream home.

Adding to the uniqueness of this opportunity, The Farmhouse is part of a site with six additional buildings (available separately), all of which have approved planning consent for residential conversion. These buildings open the door to a range of possibilities, from holiday lets or multi-generational living to bespoke development projects.

With scenic walks beginning quite literally at the doorstep, from the picturesque trails of Bradford Dale to the tranquil beauty of Lathkill Dale and the nearby village of Youlgrave offering essential amenities such as shops, a post office, cafés and traditional country inns, this is more than a property; it's a lifestyle investment in a truly exceptional location.



- Unique Development Opportunity
- Partially Completed Farmhouse
- Idyllic Rural Setting Bordered By Spectacular Derbyshire Countryside
- Many Traditional & Character Features
- Close To Shops & Amenities & Commutable Distance Of Bakewell & Matlock
- Extensive Off Road Parking
- Further Outbuildings (Available Separately)
- Within Highly Regarded Primary & Secondary School Catchment
- Viewings: Bakewell Office





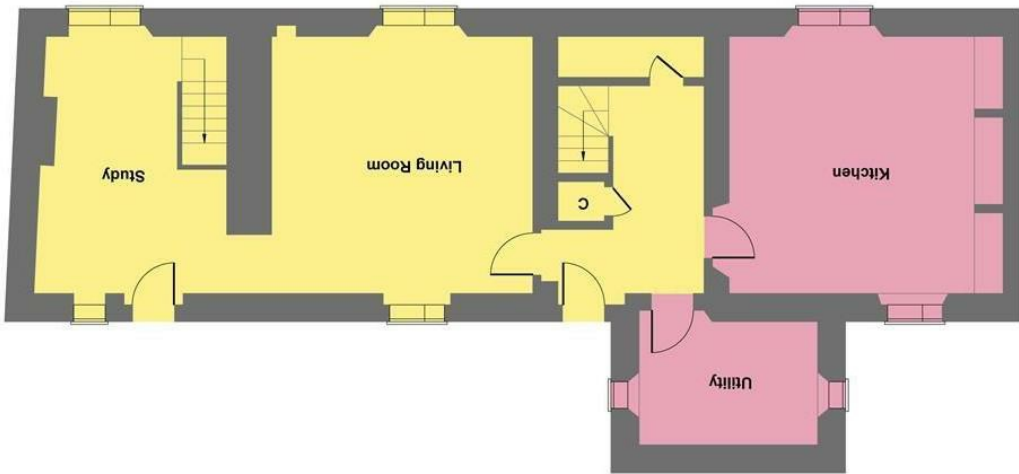
New Track Section



While we endeavour to make our sales particulars fair, accurate and reliable, they are only a general guide to the property and, accordingly, if there is any point, which is of particular importance to you, please contact the relevant office. The Agents have not tested any apparatus, equipment, fittings or services and so cannot verify they are in working order. The buyer is advised to obtain verification. Please note all the measurement details are approximate and should not be relied upon as exact. All plans, floor plans and maps are for guidance purposes only and are not to scale. Under no circumstances should they be relied upon as exact or for use in planning carpets and other such fixtures, fittings or furnishings. YOUR HOME IS AT RISK IF YOU DO NOT KEEP UP REPAYMENTS ON A MORTGAGE OR OTHER LOAN SECURED ON IT. A Life Assurance policy may be requested. Written Quotations of credit terms available on request.

Illustration for identification purposes only. Measurements are approximate not to scale.

Ground Floor



First Floor

